

BO98-01

Dispenser d'acqua 98°
Boiling water dispenser 98°



Dati tecnici

Tensione nominale	220V-110V AC, 50Hz
Consumo in standby	0.7W
Potenza d'ingresso	1.5KW
Classificazione IPX4	IPX4.
Temperatura	98°

Caratteristiche

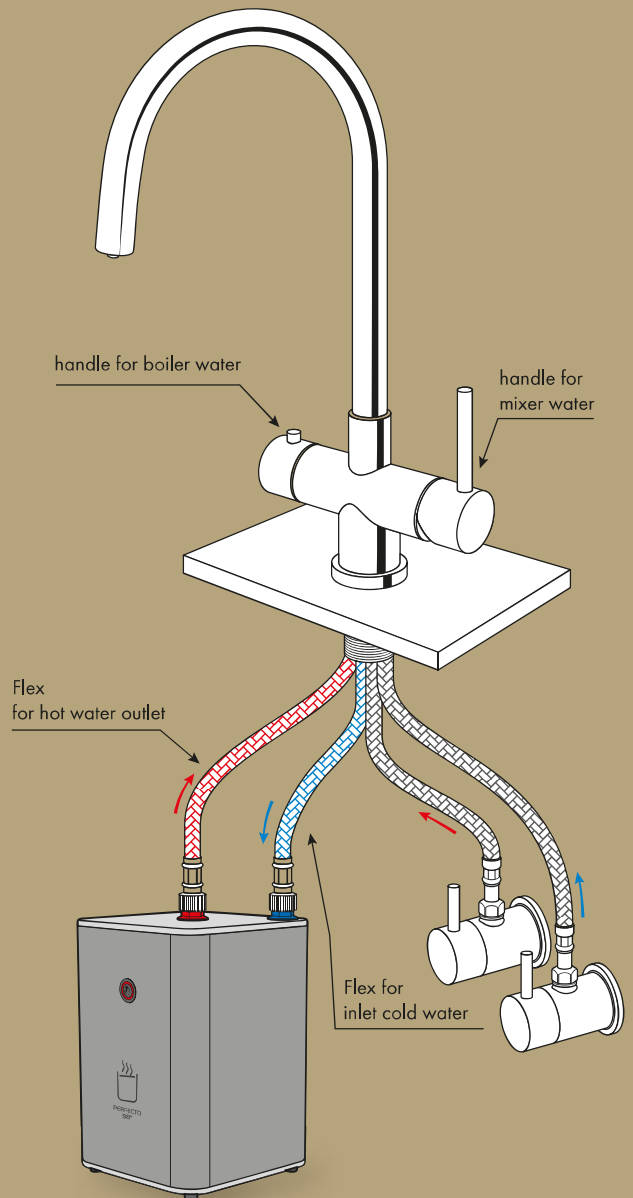
Sistema	Bassa pressione
Riscaldamento	Piastra non a contatto con l'acqua
Serbatoio	Acciaio AISI 304
Capacità	2.4 L
Riscaldamento iniziale	7-8 minuti
Mantenimento	2-3 minuti
Certificazione	CE

Technical data

Rated voltage	220V-110V AC, 50Hz
Standby power	0.7W
Input power	1.5KW
IPX4 classification	IPX4.
Present temperature	98°

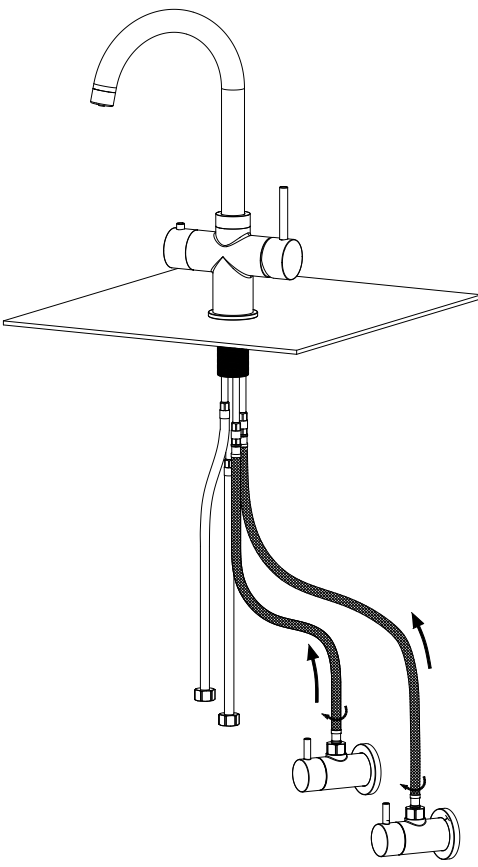
Features

System	Low pressure
Heating	Non-contact water heating plate
Tank	Stainless steel AISI 304
Capacity	2.4 L
Initial heating time	7-8 minutes
Reheating times	2-3 minutes
Certification	CE

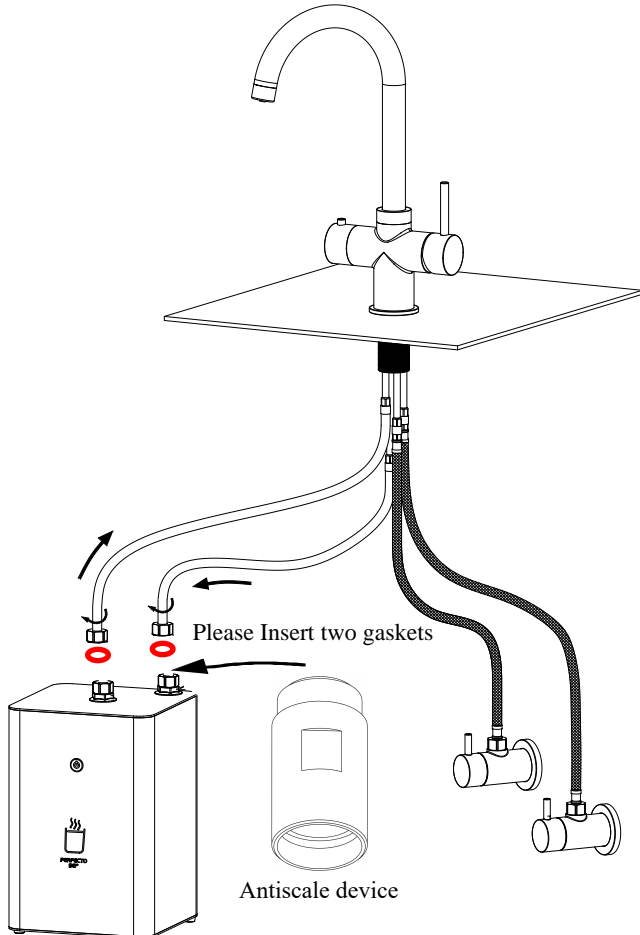


INSTALLATION GUIDE

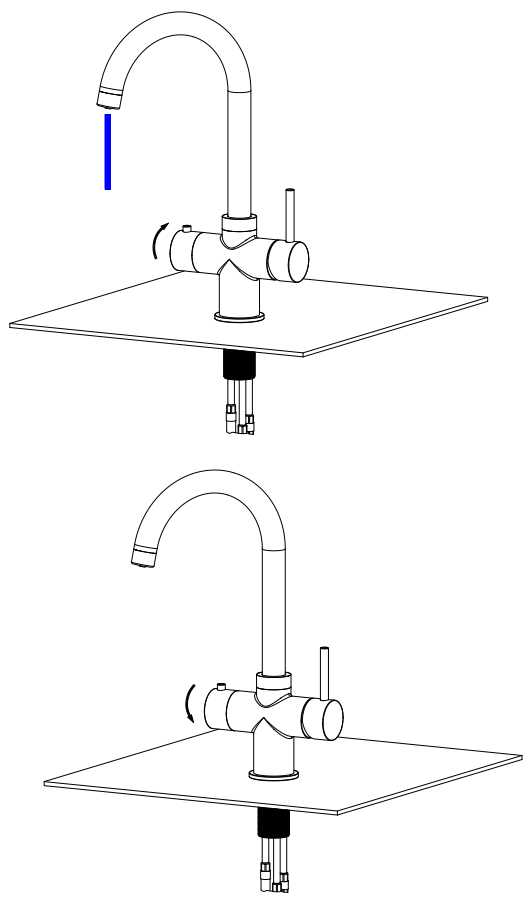
1-Connection mixer to water system



2-Connection mixer to boiling system



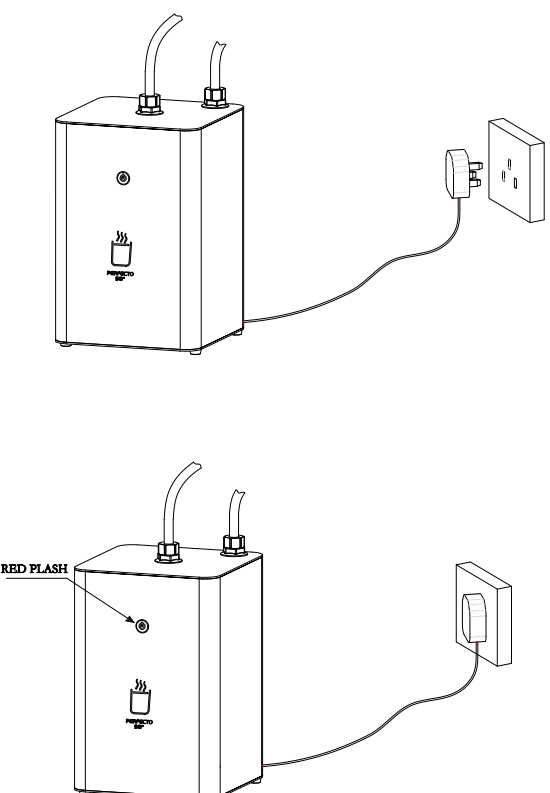
3-Fill boiling system



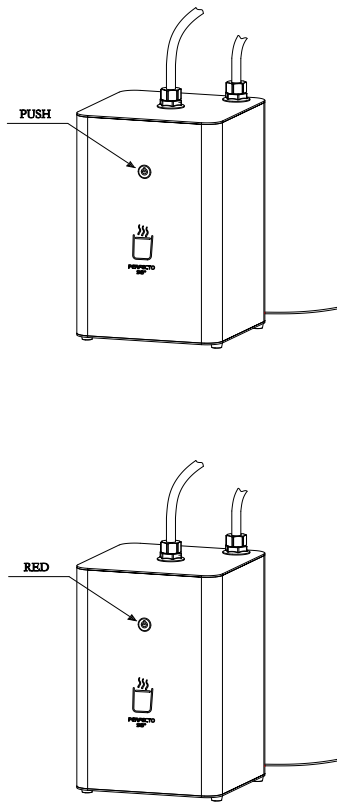
it must be tested for water tightness and no leaks.

Turn the spring back instant hot water handle and hold to fill the electronic instant hot water appliance this will take about 90 second

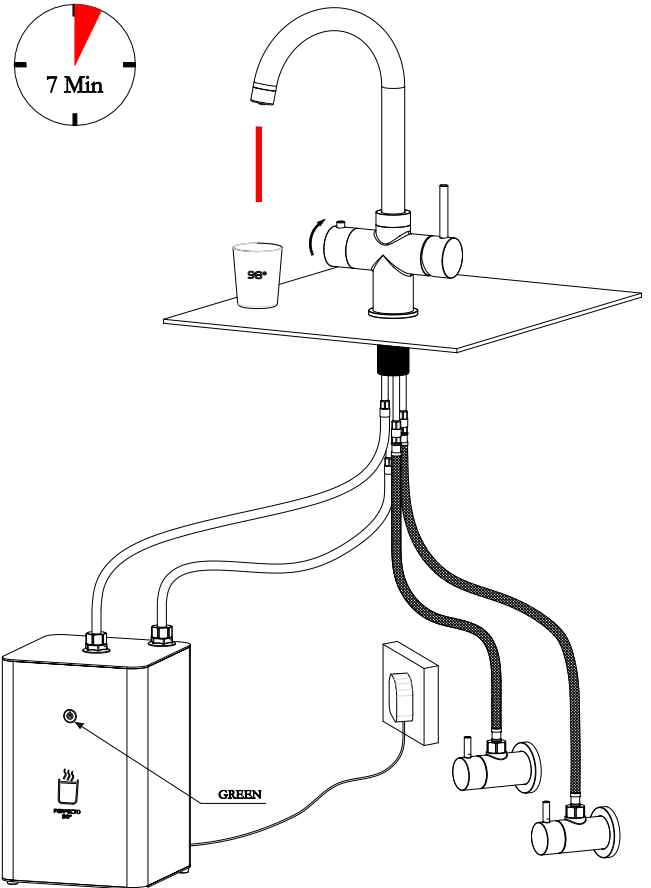
4-Connect to power



5-Turn on the boiling system



6-Functionality



The electronic instant hot water appliance will now flash in red once plug to the power socket

To push the button, the light will show Red while the tank is being heated

Once temperature has been reached the light will turn to Green